

**ACAP2 Antibody (Center)**  
**Purified Rabbit Polyclonal Antibody (Pab)**  
**Catalog # AP21049a****Specification**

---

**ACAP2 Antibody (Center) - Product Information**

Application	WB,E
Primary Accession	<a href="#">Q15057</a>
Other Accession	<a href="#">Q5FVC7</a> , <a href="#">Q6IVG4</a> , <a href="#">Q6ZQK5</a>
Reactivity	Human, Mouse
Predicted	Rabbit, Rat
Host	Rabbit
Clonality	Polyclonal
Isotype	Rabbit IgG
Calculated MW	88029

**ACAP2 Antibody (Center) - Additional Information****Gene ID** 23527**Other Names**

Arf-GAP with coiled-coil, ANK repeat and PH domain-containing protein 2, Centaurin-beta-2, Cnt-b2, ACAP2, CENTB2, KIAA0041

**Target/Specificity**

This ACAP2 antibody is generated from a rabbit immunized with a KLH conjugated synthetic peptide between 489-522 amino acids from the Central region of human ACAP2.

**Dilution**

WB~~1:1000

E~~Use at an assay dependent concentration.

**Format**

Purified polyclonal antibody supplied in PBS with 0.09% (W/V) sodium azide. This antibody is purified through a protein A column, followed by peptide affinity purification.

**Storage**

Maintain refrigerated at 2-8°C for up to 2 weeks. For long term storage store at -20°C in small aliquots to prevent freeze-thaw cycles.

**Precautions**

ACAP2 Antibody (Center) is for research use only and not for use in diagnostic or therapeutic procedures.

**ACAP2 Antibody (Center) - Protein Information****Name** ACAP2

**Synonyms** CENTB2, KIAA0041

**Function** GTPase-activating protein (GAP) for ADP ribosylation factor 6 (ARF6). Doesn't show GAP activity for RAB35 (PubMed:[30905672](#)).

**Cellular Location**

Cell membrane. Endosome membrane; Peripheral membrane protein. Note=Colocalizes with RAB35 at the membrane protrusions of HEK293T cells.

**Tissue Location**

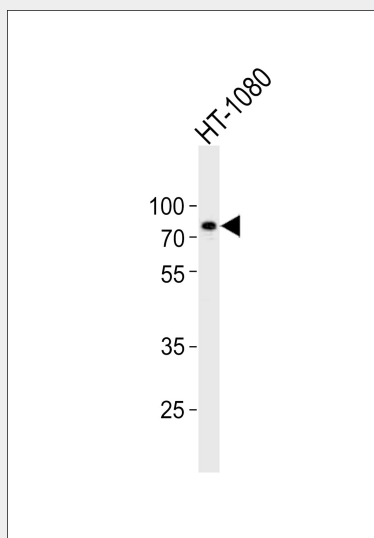
Widely expressed. Highest level in lung.

**ACAP2 Antibody (Center) - Protocols**

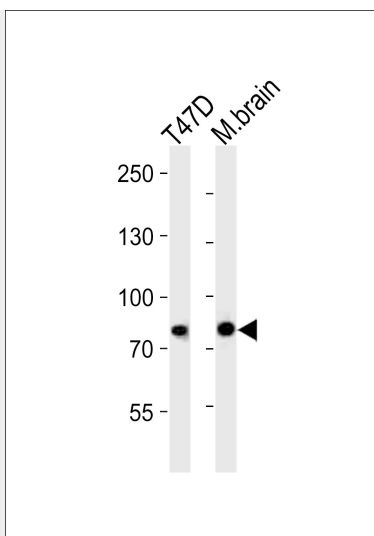
Provided below are standard protocols that you may find useful for product applications.

- [Western Blot](#)
- [Blocking Peptides](#)
- [Dot Blot](#)
- [Immunohistochemistry](#)
- [Immunofluorescence](#)
- [Immunoprecipitation](#)
- [Flow Cytometry](#)
- [Cell Culture](#)

**ACAP2 Antibody (Center) - Images**



Western blot analysis of lysate from HT-1080 cell line, using ACAP2 Antibody (Center)(Cat. #AP21049a). AP21049a was diluted at 1:1000. A goat anti-rabbit IgG H&L(HRP) at 1:10000 dilution was used as the secondary antibody. Lysate at 20ug.



Western blot analysis of lysates from T47D cell line and mouse brain tissue (from left to right), using ACAP2 Antibody (Center)(Cat. #AP21049a). AP21049a was diluted at 1:1000 at each lane. A goat anti-rabbit IgG H&L(HRP) at 1:10000 dilution was used as the secondary antibody. Lysates at 20ug per lane.

#### **ACAP2 Antibody (Center) - Background**

GTPase-activating protein (GAP) for ADP ribosylation factor 6 (ARF6).

#### **ACAP2 Antibody (Center) - References**

Jackson T.R.,et al.J. Cell Biol. 151:627-638(2000).  
Nomura N.,et al.DNA Res. 1:223-229(1994).  
Ohara O.,et al.Submitted (JAN-2003) to the EMBL/GenBank/DDBJ databases.  
Ota T.,et al.Nat. Genet. 36:40-45(2004).  
Mural R.J.,et al.Submitted (SEP-2005) to the EMBL/GenBank/DDBJ databases.